

REDEFINING
PERFECTION

JOOSHIN MACHINE Co., Ltd.

Head office. 25-16, Geobuk-ro, Seo-gu, Incheon Metropolitan City

Tel. 82-32-581-4605/6 Fax. 82-32-581-4607

E-mail. 114@jooshin7.com

www.jooshin7.com



Setting a New Standard for Flawless Technology

We do more than just develop technology –
we pioneer new paradigms of excellence.

我们建立一个完美技术的新标准。

J
O
O

S
H
I
N

At Jooshin Machine Co., Ltd., our journey is guided by dreams of unparalleled innovation, as we redefine horizons in the fields of cosmetics, food, pharmaceuticals, and chemical machinery. Your success is our badge of honor.

Steering the course of factory automation and boosting machine performance is our passion; your satisfaction, via swift after-sales support, is our top priority. Our efforts are laser-focused on fostering growth together with you, every step of the way.

We vow never to give up on our relentless pursuit of absolute technical perfection through R&D. Hand in hand, we move towards a brighter future, as Jooshin Machine Co., Ltd. promises to be your steadfast partner, safeguarding your success.

(株)柱信机械，追求完美技术的新标准而前进。作为化妆品、食品、制药、化学机械的专家，您的成功就是我们的骄傲。引领工厂自动化以及机械性能升级，通过迅速的售后服务将您的满意放在首位。我们重点放在与客户一起成长而努力。通过持续的研发，我们向更完美的技术不停的前进，柱信机械将跟您一起走向更好的未来，守护客户的成功，成为您的坚实的合作伙伴。

Redefining Perfection



Message from CEO

Jooshin Machine is a leading specialist in the manufacture of chemical machinery, achieving exceptional results in the cosmetics, food, pharmaceutical, and chemical machinery sectors. We provide comprehensive services from expert machine design to manufacturing and installation, building on our vast experience in various cosmetic and pharmaceutical facilities, as well as our expertise in industrial machine research technology.

Guiding the future of factory automation and machine performance enhancement, Jooshin Machine prioritizes customer satisfaction and trust. Every machine we build is the embodiment of our meticulous care and effort, aimed at increasing production efficiency. We strive tirelessly towards perfect technology and ceaseless innovation, dedicated to delivering the highest quality to our esteemed clients.

In our commitment to empowering businesses, we offer complete line consulting for new companies and provide technical support for production managers. We always prioritize our customers, ensuring uninterrupted product production through our unwavering dedication.

Jooshin Machine constantly strives for advancement and development. We strive to reciprocate the support of our valued customers by giving our best, and we warmly invite your continued encouragement and support. Our vision is to continuously grow as a company alongside our customers.

We warmly invite you to anticipate a future filled with progress and success, in partnership with Jooshin Machine Co., Ltd. Thank you for your support.

CEO of Jooshin Machine Co., Ltd.,
Keun-O Kim

(株)柱信机械作为化学机械专业制造企业，在化妆品、食品、制药、化学机械领域取得了卓越成果。从机械的设计到制造、安装调试，我们凭借在化妆品和制药行业里丰富的设备制造经验以及研发技术，为客户提供最佳的质量和服务。

引领工厂自动化以及提升机械性能的我们(株)柱信机械，将客户的满足和信任放在第一位，对每一台设备真诚和努力，提高生产效率。我们又追求不断的完善以及创新技术，一直努力实现创造高品质的设备提供给客户。

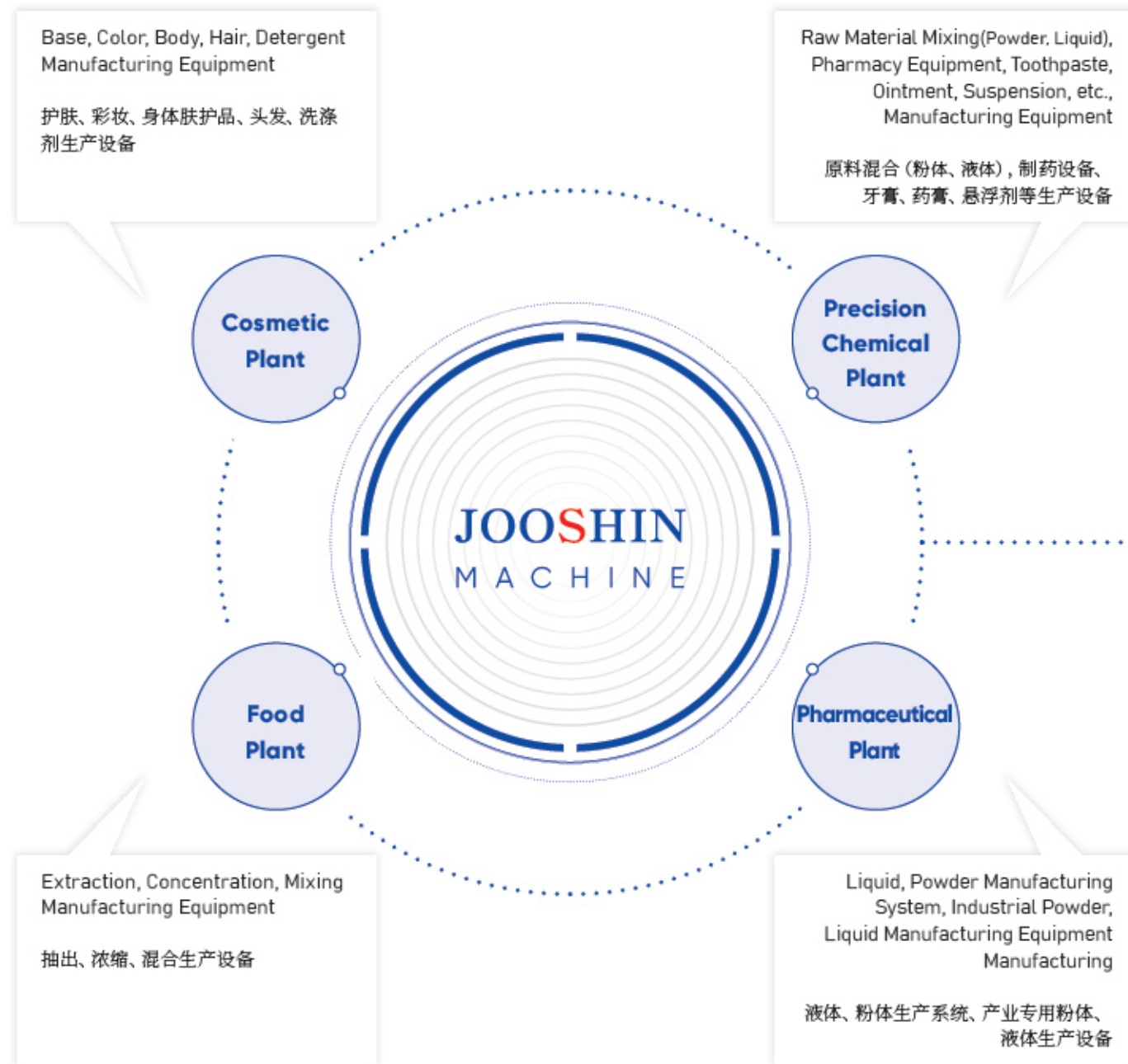
此外，我们针对新工厂提供生产线设计的咨询，还为客户提供技术方面的支持。我们始终以客户为先，尽最大努力防止产品生产方面的问题。

(株)柱信机械朝着不断前进和发展的企业目标奔跑，为了报答所有客户而努力。欢迎你们给我们不断的支持和建议，(株)柱信机械将始终致力于成为与您一起成长的企业。

请大家期待与我们(株)柱信机械一起成长的未来。谢谢。

周鑫机械有限公司首席执行官。
金根吾

Business Areas



Cosmetic Plant

- Atomizer(Pulverizer), Henschel(Powder) Mixer, Ribbon Mixer, Lipstick Mixer, Mascara Mixer, Pan Mixer, Vacuum Difun Mixer(Color Makeup Equipment)
- Vacuum Agi Homo Mixer, Disper Mixer (Base and Color Equipment)
- Atomizer(Pulverizer), Henschel(Powder) Mixer, Ribbon Mixer, Lipstick Mixer, Mascara Mixer, Pan Mixer, , Vacuum Difun Mixer (彩妆设备)
- Vacuum Agi Homo Mixer, Disper Mixer (护肤品以及彩妆设备)



Precision Chemical Plant

- Liquid Mixing Mixer, Pharmacy Mixer, Suspension manufacturing Mixer Toothpaste Mixer, Ointment Mixer, Storage Container (Raw Material Mixing Mixer, Pharmacy Mixer, Suspension Mixer, Toothpaste Mixer, Ointment Mixer)
- Liquid Mixing Mixer, Pharmacy Mixer, Suspension manufacturing Mixer Toothpaste Mixer, Ointment Mixer, Storage container (原料混合器、制药混合器、悬浮剂搅拌机、牙膏搅拌机、药膏搅拌机)



Food Plant

- Extractor, Thickener, Reactor
- Liquid Mixing Mixer, Storage Tank (Reactor, Liquid Mixing Mixer, Storage Container)
- Extractor, Thickener, Reactoe
- Liquid Mixing Mixer, Storage Tank (反应器、液体混合机、储存容器)



Pharmaceutical Plant

- Liquid Mixing Mixer, Pharmacy Mixer, Storage Tank
- Secondary Battery Mixer (Anode, Cathodic Agent)
- Secondary Battery(Anode, Cathodic Agent) Mixer
- Liquid Mixing Mixer, Pharmacy Mixer, Storage Tank
- Secondary Battery Mixer (Anode, Cathodic Agent) 二次电池(两极、阴极) Mixer

Major Products

Atomizer	10
Henschel Mixer	12
Vacuum Agi Homo Mixer	14
Disper Mixer	19
Difun Mixer	20
Lipstick Mixer	21
Laboratory Atomizer	22
Laboratory Henschel Mixer	
Laboratory Homo Mixer	

1



Atomizer

2



Henschel Mixer

3



Vacuum Agi Homo Mixer

4



DISPER MIXER

5



Difun Mixer

6



Lipstick Mixer

7



Laboratory Atomizer

8



Laboratory Henschel Mixer

9



Laboratory Homo Mixer

Atomizer



JS-AT100

Product Description | 产品说明

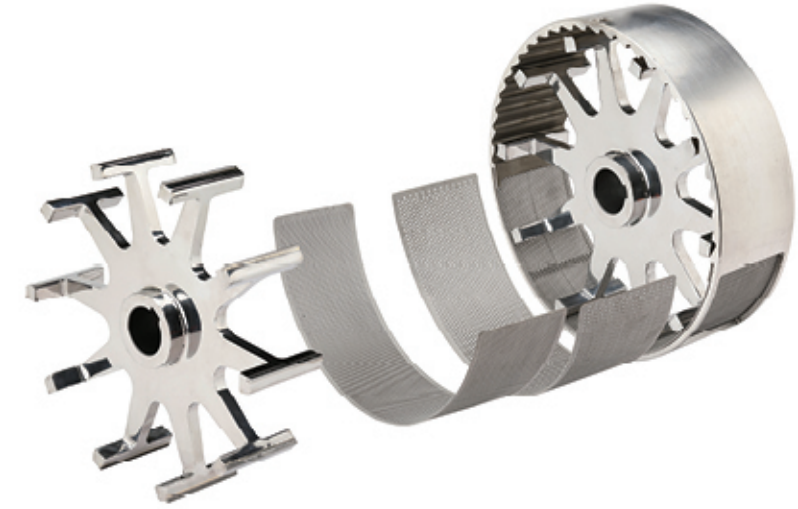
The JS-Atomizer is a high-performance pulverizer specifically designed to pulverize raw materials, comprised of a high-speed rotating hammer(Rotor) and liner(Stator). With its uniquely developed impeller and housing, it can pulverize the powder in a short time, minimizing discoloration and damage from heat, while boasting uniform particles and high productivity.

JS-Atomizer是由高速旋转的榔头 (Rotor) 以及顶盘 (Stator) 组成, 专门用于微粉碎粉末的高性能粉碎机。采用了自主研发的叶轮和外壳, 可在短时间内把粉料进行微粉碎, 减少热致变色和损伤, 具有产品颗粒均匀、生产效率高的特点。

Applicable Products | 应用产品

Fine powder, color powder raw materials, and other powder products requiring particle adjustment

微粉碎粉料, 彩色粉料等需要调节颗粒的粉末产品



Major Components of Atomizer | Atomizer 主要组成配件

- Hammer made of highly wear-resistant tungsten cemented carbide super hard alloy.
- Integrated liner.
- Mesh net capable of particle adjustment ($\phi 0.7 \sim \phi 2.5$).
- Screw Feeder(Powder Conveying Device) capable of controlling material supply with volume-type RPM adjustment.

- 使用耐磨性良好的Tungsten cemented carbide super hard alloy制作的榔头
- 一体式顶盘
- 可调节颗粒的筛网 ($\phi 0.7 \sim \phi 2.5$)
- 通过RPM调节的进料螺杆, 可以调整进料速度 (粉末输送装置)

Product Features | 设备特征

The parts composition is streamlined to improve production efficiency and facilitate maintenance, including the reduction of disassembly and cleaning times. Cooling water circulates on all sides(front, side, back) of the hammer housing to prevent overheating. It is designed to provide a more pleasant working environment with a control method that prioritizes worker safety and a structure that prevents powder backflow.

为了缩短拆卸组装和清洗时间, 简化了配件配置, 提高了生产效率并简化了维护工作。冷却水在榔头外壳的所有面(前、侧、后)循环, 防止过热现象。采用最注重工作人员安全的控制方式和防止粉末逆流的结构, 提供更优化的工作环境。的特点。

Specifications | 设备参数

	AT03	AT05	AT075	AT100
CAPA	20Kg/Batch	60Kg/Batch	90Kg/Batch	120Kg/Batch
Motor Power	3HP	5HP	7.5HP	10HP
Dimension	L870 * W840 * H1,370	L1,010 * W990 * H1,650	L1,150 * W1,140 * H1,770	L1,440 * W1,270 * H1,350

Henschel Mixer



JS-HS100

Product Description | 产品说明

The JS-HENSCHEL MIXER is a specialized mixer for powder mixing, designed to efficiently produce desired colors and textures. It excels in tasks such as mixing, coating, and particle dispersion within a short time. This mixer is suitable not only for powder-to-powder mixing but also for incorporating additives(oils, fragrances, etc.) by mixing and coating them with powder using a binder tank(spray spraying method). Additionally, it is equipped with a tank jacket for a cooling function.

JS-HENSCHEL MIXER是一款专门用于粉末混合的搅拌机，是一款专门用于在短时间内混粉、涂层、颗粒分散等生产所需颜色和质感的粉末搅拌机。不仅适合粉末之间的混合，还适合利用粘合剂锅（喷雾喷射方式）混合和涂层粉末和添加剂（油、香料等），并具有外壳的冷却系统。

Applicable Products | 应用产品

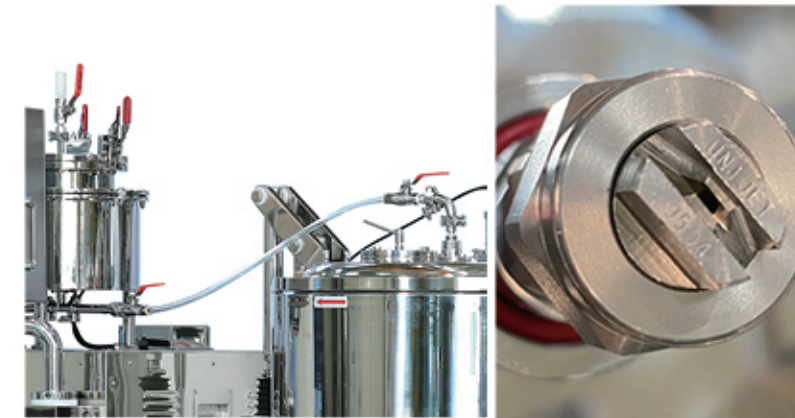
Powder raw materials that require mixing, coating, bonding, or dispersion

需要混合、涂层、结合、分散等的粉料



▶ The JS-HENSCHEL MIXER offers a variety of impeller shapes suitable for powder production, allowing users to change the impeller according to the characteristics and formulation of the product they produce.

▶ JS-HENSCHEL Mixer提供多种形式的叶轮，适合粉末制造，因此根据生产产品的特点和质地，可以更换叶轮使用。喷油锅有加热功能，通过空气喷射系统可以在没有残留物的情况下喷射添加剂。使用更换式软管作为投入管，可持续保持清洁状态。



▶ The binder device can be heated, and the additive can be introduced without any residue using the air spray system. To ensure cleanliness at all times, a replaceable tube can be used as the input tube.

▶ JS-HENSCHEL Mixer提供多种形式的叶轮，适合粉末制造，因此根据生产产品的特点和质地，可以更换叶轮使用。喷油锅有加热功能，通过空气喷射系统可以在没有残留物的情况下喷射添加剂。使用更换式软管作为投入管，可持续保持清洁状态。



Touch Control Panel(Optional) | 触摸式控制板



Button Control Panel (Standard) | 按钮式控制板

Specifications | 设备参数

	HS05	HS10	HS20	HS50	HS80	HS100	HS150	HS200	HS300	HS500
TANK CAPA	5L	10L	20L	50L	80L	100L	150L	200L	300L	500L
MAX. CAPA	3.3L	6.6L	13.3L	33L	53L	66L	100L	133L	200L	330L
MIN. CAPA	1L	2L	4.5L	11L	17L	22L	33L	44L	67L	110L
Dimension	L1,090 W400 H1,430	L1,250 W450 H1,470	L1,230 W450 H1,560	L2,390 W1,480 H1,770	L2,670 W1,550 H2,150	L2,830 W1,600 H2,250	L2,650 W1,800 H2,360	L2,830 W2,100 H2,470	L3,360 W2,360 H2,770	L3,620 W2,310 H3,200

Vacuum Agi Homo Mixer



As a specialist in plant design, Jooshin handles the manufacturing facilities for cosmetics, pharmaceuticals, food, and chemical products. The company conducts manufacturing consulting while considering customer requirements, product characteristics, production processes, and more.

JOOSHIN 是专门从事成套设备设计的企业，主要经营化妆品、制药、食品、化学产品的制造设备，综合考虑顾客的要求条件、产品特点、生产过程等进行制造咨询。



Product Description | 产品说明

The JS-Vacuum Agi Homo Mixer is a homogenizing(emulsifying) mixer that has a vacuum function, equipped with heating, cooling, and defoaming capabilities. The homo impeller, scraper paddle, and agitator can all be finely adjusted to different RPMs, and the homo impeller can rotate in both directions. When rotating forward, it generates strong turbulence to homogenize the product, and when rotating in reverse, it utilizes strong pumping power to thoroughly mix the product.

JS-Vacuum Agi Homo Mixer是一款具有真空功能的均质化(乳化)搅拌机，具有加热、冷却、脱泡等功能。均质叶轮、刮板和搅拌器可以调节不同的RPM，均质叶轮可以双向旋转。正向旋转时产生强大的涡流，使产品均质化，反方向旋转时强大的泵吸力量将产品均匀搅拌。

Applicable Products | 应用产品

Creams, lotions, gels, shampoos, and other liquid products that require emulsification and mixing

乳霜、乳液、软膏类、洗发水等需要乳化及搅拌的液体产品。

Vacuum Agi Homo Mixer

Paravisc Paddle | 螺旋带桨叶
Enhances the flow of high-viscosity products
提高高粘度产品的流动性



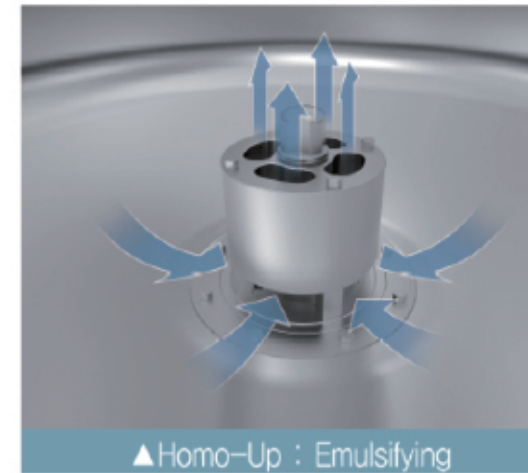
JS-AH50

Temperature sensors are attached to the inside of the tank and the jacket, and a vacuum sensor is attached to the top of the tank to automatically maintain the set temperature and vacuum. Moreover, it is possible to tilt the tank up to 100 degrees for product discharge, and it is equipped with a CIP cleaning function (optional).

乳化锅内部以及外壳上的温度感应器、乳化锅上不的真空测量感应器可以自动保持设定的温度和真空度。此外, 可以将乳化锅倾斜至100度排出产品, 并具有CIP清洗功能(可选)

Specifications | 设备参数

	AH30	AH50	AH100	AH200	AH300	AH500	AH1000	AH2000	AH3000
MAX. CAPA	30L	50L	100L	200L	300L	500L	1000L	2000L	3000L
MIN. CAPA	10L	15L	30L	60L	90L	150L	300L	600L	900L
Motor Power (JS-Ultra Impeller)	2HP	3HP	5HP	7.5HP	10HP	20HP	30HP	50HP	60HP
Dimension	L1,900 W850 H2,255 (2,800)	L1,950 W850 H2,370 (2,980)	L1,950 W900 H2,300 (3,200)	L2,000 W900 H2,500 (3,600)	L2,200 W1,200 H3,200 (4,600)	L2,600 W1,200 H3,200 (4,600)	L3,000 W1,450 H3,700 (5,400)	L3,000 W1,950 H4,100 (5,900)	L3,400 W2,300 H5,400 (7,400)



▲Homo-Up : Emulsifying

JS-Homo Impeller

A homo(Mark 2) impeller with a wide manufacturing range. It is capable of producing various products, including liquids ranging from low to high viscosity (0-70,000).

生产范围广泛的Homo叶轮。可以生产从低粘度到高粘度 (0~70, 000) 液态的各种产品。

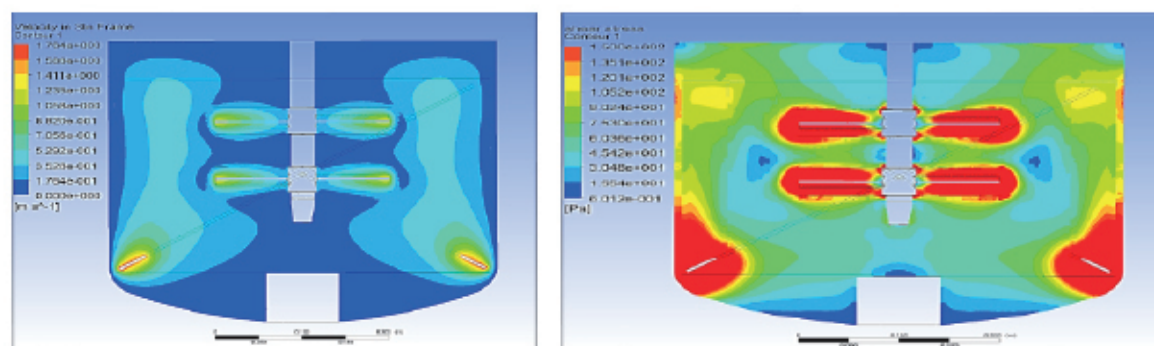


JS-Ultra Impeller

An ultra impeller with excellent dispersion, emulsification, and shear force, making it suitable for manufacturing products with high viscosity (10,000-150,000 cps).

分散性、乳化性、剪切力都非常优秀的超级叶轮。
合适生产高粘度 (10, 000~150, 000cps) 的产品。

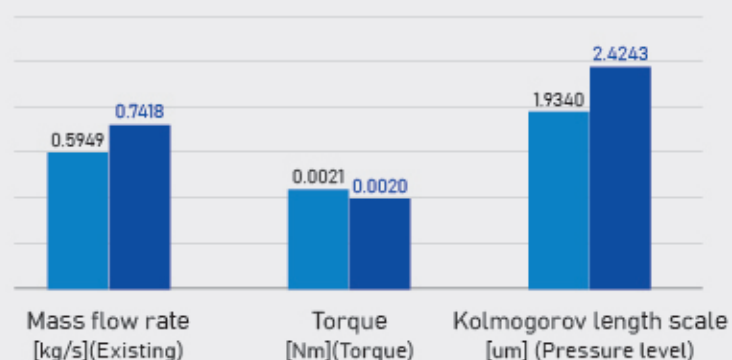




Agitator Performance Improvement Comparison Image

Emulsifier Impeller Rotor-Stator(High-speed Shear Mixer) Performance Improvement Comparison Table

乳化搅拌机叶轮Rotor-Stator(高速剪切搅拌机)性能改善比较



Existing 之前
B-Type



Design Change 设计变动
JS-Mark II



Enhancement of overall performance through configuration changes of the new(JS-II) impeller

- Flow rate increased by 25%
- Kolmogorov scale increased by 20%: Minimum size in a narrow area
- Particle Distribution: Within 0.5-10 μm (decreased by increasing rotor speed)
- Motor-side torque reduced by 6% (increase in power efficiency)
- Able to disperse and emulsify from low viscosity to high viscosity substances (0-70,000 cps)

新款(JS-II)叶轮形状变化改善的整体性能

- 流量增加25%
- Kolmogorov scale增加20%: 狭小领域中的最小规模
- 粒子分布: 0.5~10 μm 以内。(Rotor旋转数越多, 粒子分布越少)
- 发动机扭矩减少6% (增加动力效率)
- 可以从低粘度到高粘度产品的分散、乳化 (0~70,000cps)

Disper Mixer



Optional 可选

A saw-toothed disperser mixer, suitable for dispersion, is attached and can be replaced with a propeller-type impeller suitable for mixing, as needed.

安装了合适分散的锯齿形分散叶轮, 根据需求可以更换适合混合的螺旋桨叶轮



Product Description | 产品说明

- This is a disperser mixer that is suitable for dispersing various raw materials.
- With a volumetric RPM, the impeller is convenient to operate, and it can be adjusted vertically and horizontally (hydraulically).
※ Impeller RPM: up to 3200

- 适合分散各种原料的分散搅拌机。
- 叶轮RPM调节方便, 上下左右可调节 (液压式)。
※ 叶轮RPM可达到3200

Applicable Products | 应用产品

- All liquids requiring dispersion or mixing
- 需要分散或者混合的所有液体

Specifications | 设备参数

	D03	D05	D075	D100
Motor Power	3HP	5HP	7.5HP	10HP
Dimension	L1,320 * W700 * H1,800 (UP & TILTING 2,700)	L1,380 * W750 * H1,850 (UP & TILTING 2,890)	L1,430 * W800 * H1,950 (UP & TILTING 3,000)	L1,460 * W820 * H2,050 (UP & TILTING 3,150)

Difun Mixer



An anchor-type impeller, suitable for mixing high-viscosity powder products.

适用于高粘度粉末产品搅拌的锚固型叶轮

JS-DF80

Product Description | 产品说明

The Difun Mixer is a mixer suitable for mixing and dispersing powders with high moisture or oil content. It minimizes dead space where the impeller does not reach (approximately a 1mm gap between the tank and impeller) and is effective in mixing high-viscosity powder products.

※ Available options: vacuum, heating, or cooling.

Difun mixer是适合混合水分或油分含量较高的粉末的搅拌机。将叶轮无法触及的死区最小化(锅内侧面和叶轮间距约1mm左右),有效搅拌电镀较高的粉末产品。

※ 可选: 真空、加热、冷却

Applicable Products | 应用产品

Powder products with high moisture or oil content

水分或者油分含量高的粉料

Specifications | 设备参数

	DF03	DF05	DF075	DF100
Motor Power	3HP	5HP	7.5HP	10HP
Dimension	L1,700 * W1,020 * H1,625 (2,300)	L1,800 * W850 * H1,825 (2,500)	L2,140 * W835 * H1,905 (2,500)	L2,250 * W800 * H2,200 (2,900)

Lipstick Mixer



A saw-toothed disperser impeller, suitable for dispersion.

合适分散的锯齿形分散叶轮

JS-LM80

Product Description | 产品说明

The LM is a mixer specialized for dispersion, mixing, and dissolution of products and raw materials. It is equipped with a disperser impeller and features vacuum, heating, and cooling functions.

Lipstick Mixer是专门用于分散、混合、溶解产品和原料的搅拌机。配备分散叶轮,具有真空、加热、冷却功能。

Applicable Products | 应用产品

Lipstick and lipstick ingredients, products requiring heating and dispersion

口红以及口红原料、需要加热和分散的产品

Specifications | 设备参数

	LM30	LM50	LM100
Motor Power	1HP	2HP	3HP
Dimension	L1,700 * W1,020 * H1,625 (2,300)	L1,800 * W850 * H1,825 (2,500)	L2,210 * W780 * H1,975 (2,780)

Laboratory



Laboratory Atomizer

A laboratory atomizer that matches the performance of our company's atomizer (includes a cooling function).

这是一款与我们的粉碎机性能相同的实验室专用粉碎机（包括冷却系统）

Dimensions 面积	L 400 * W 200 * H 550
RPM	up to 11,000
Electric 电力	1.5kw



Laboratory Henschel Mixer

LA laboratory Henschel mixer that matches the performance of our company's Henschel mixer (does not include a cooling function).

这是一款与我们的混粉机性能相同的实验室专用混粉机（不包括冷却系统）

Dimensions 面积	L 350 * W 200 * H 520
RPM	up to 5,500
Electric 电力	1.5kw



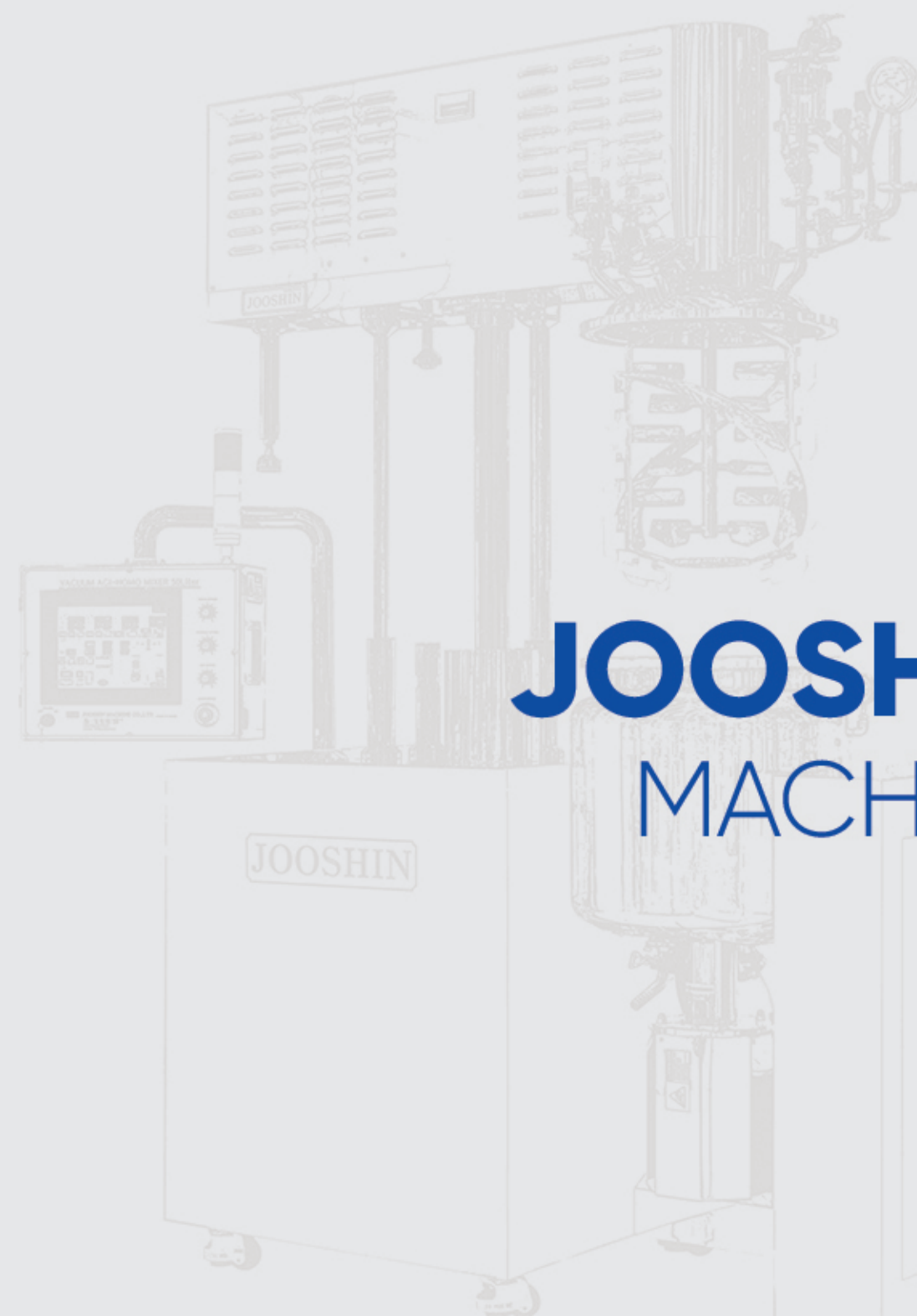
Laboratory Homo Mixer

A laboratory Homomixer that matches the performance of our company's Emulsion mixer.

这是一款与我们的乳化锅性能相同的实验室专用乳化锅

Features 特征	• Impeller set (Homo, Ultra, Disperser)
	• A tank capable of cooling and heating using cold and hot water, as well as equipped with vacuum functionality (additional options)
	• 叶轮套 (Homo, Ultra, Disper)
	• 使用冷温水进行冷却、加热以及真空的乳化锅(可选)

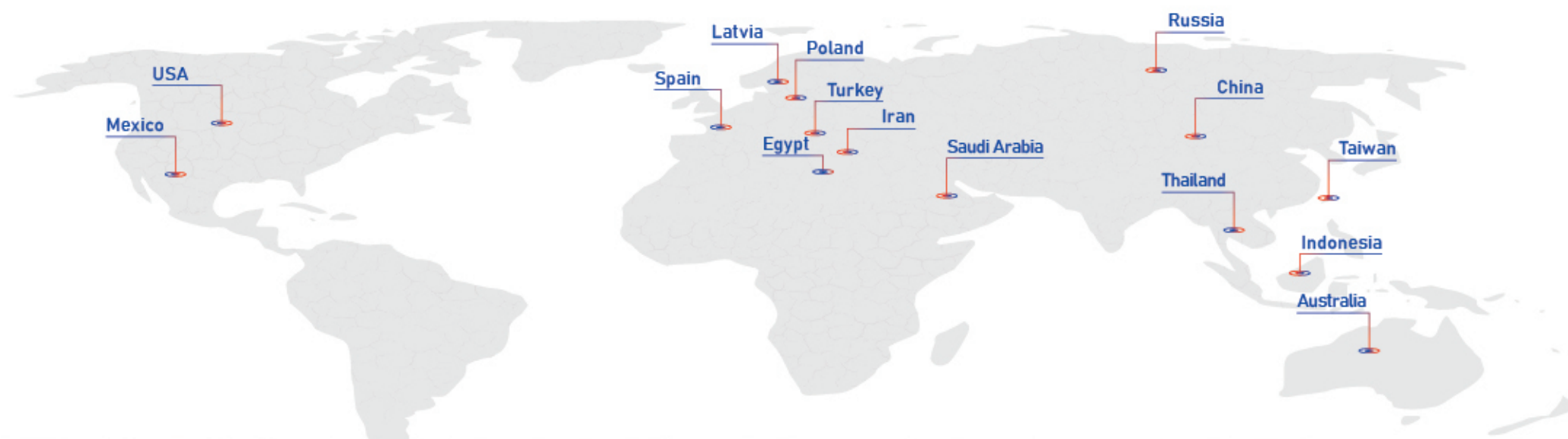
Dimensions 面积	L 350 * W 200 * H 520
RPM	up to 6,000
Electric 电力	1.5kw



JOOSHIN MACHINE



Embracing the World, Our Remarkable Progress Beyond Domestic Boundaries



- ◉ 1996. 10. Jooshin Industrial Machinery established.
- ◉ 1997. 01. Main products (Vacuum Agi Homo Mixer & Henschel Mixer & Atomizer).
- ◉ 2000. 08. Atomizer(Pulverizer) & Henschel Mixer developed.
- ◉ 11. Exported to Thailand (Vacuum Agi Homo Mixer 100L & Henschel Mixer & Atomizer).
- ◉ 2001. 05. Exported to USA and Mexico.
- ◉ 2002. 03. Exported to China and Malaysia.
- ◉ 2003. 01. Exported to Turkey and Latvia.
- ◉ 2005. 03. Exported to Indonesia.
- ◉ 2010. 12. Exported to Iran.
- ◉ 2011. 02. Relocated to new head office (Seoknam-dong, Seo-gu, Incheon).
- ◉ 2013. 10. Certification of Conformity: ISO certificate (KSQ / ISO 9001: 2008, Industrial mixer & pulverizer structure).
Attended Shanghai Cosmoprof Exposition Exhibition, China.
- ◉ 2014. 02. EU export certification (Korea-EU FTA, Korea-ASEAN FTA).
Attended Shanghai Cosmoprof Exposition Exhibition, China.
- ◉ 2015. 03. Exported to Spain.
Attended Shanghai Cosmoprof Exposition Exhibition, China.
- ◉ 2016. 02. Exported to Turkey (GMP - Vacuum Agi Homo Mixer).
- ◉ 2016. 07. Name changed to Jooshin Machine Co., Ltd.
- ◉ 2016. 08. New construction of the headquarters (1st factory).
Attended Shanghai Cosmoprof Exposition Exhibition, China.
- ◉ 2019. Established an R&D dedicated department.
Gained recognition as a venture company / Inno-Biz company / ISO9001 / CE certification / Autonomous safety certification / obtained 3 patents / additional 3 design patents.
- ◉ 2020. 01. Launched new product "Laboratory Homomixer and Emulsifier 50L"(Homomixer impeller, ultra-impeller, dispersive chopper type impeller) interchangeable.
Developed new product "Laboratory Atomizer & Henschel Mixer" (Henschel Mixer 2L & Atomizer 02).
Developed "Basic Emulsifier Homomixer impeller"(Emulsifier) for homogenization & particle crushing (design certification).
Developed "Basic and Coloring Emulsifier & Dispersion Impeller"(Emulsifier) for homogenization, dispersion, and particle crushing (design certification).
- ◉ 2020. 02. Developed new product "Two-axis Henschel Mixer"(Henschel II Mixer 100L) Upper-normal reverse / lower-normal rotation for high speed.
- ◉ 2022. Participated in the USA and China Cosmoprof Exposition Exhibition.

- ◉ 1996. 10. 柱信产业机械 (JOOSHIN INDUSTRIAL MACHINERY) 成立
- ◉ 1997. 01. 主要产品 (Vacuum Agi Homo Mixer & Henschel Mixer & Atomizer)
- ◉ 2000. 08. 研发粉碎机&混粉机 Atomizer(Pulverizer) & Henschel Mixer
- ◉ 11. 向泰国出口 (accum Agi Homo Mixer & Henschel Mixer & Atomizer)
- ◉ 2001. 05. 向美国、墨西哥出口
- ◉ 2002. 03. 向中国、马来西亚出口
- ◉ 2003. 01. 向土耳其、拉脱维亚出口
- ◉ 2005. 03. 向印度尼西亚出口
- ◉ 2010. 12. 向伊朗出口
- ◉ 2011. 02. 新建工厂迁移 (仁川市西区石南洞)
- ◉ 2013. 10. Certification of Conformity 认证
ISO认证 (KSQ/ISO9001:2008, 产业用混合机&粉碎机构造)
参加2013中国上海美博会
- ◉ 2014. 02. EU出口认证 (韩-EU FTA, 韩-ASEAN FTA)
参加2014中国上海美博会
- ◉ 2015. 03. 向西班牙出口
参加2015中国上海美博会
- ◉ 2016. 02. 向土耳其出口 (GMP - Vacuum Agi Homo Mixer)
- ◉ 07. 公司名称改成为“柱信机械” (JOOSHIN MACHINE Co., Ltd.)
- ◉ 08. 本部 (第1工厂) 新建
参加2016中国上海美博会
- ◉ 2019. 建立R&D 研发部
风险企业/技术创新型中小企业/ISO9001/CE认证/自主安全认证/3件专利/3件设计
- ◉ 2020. 01. "实验用Homo Mixer和乳化锅50L" 上市 (Homo Impeller, Utra Impeller, Disper Chopper Imperller)更换型
"实验用粉碎机和混粉机" (Henschel Mixer 2L & Atomizer02)
研发 "基础乳化锅Homo Mixer专用Impeller" (Emulsifier) 均质化&颗粒粉碎兼用 (设计认证)
研发 "基础和彩妆乳化&分散专用Impeller" (Emulsifier) 均质化&分散&颗粒粉碎兼用 (设计认证)
- ◉ 02. "2轴专用混粉机" (Henschel II Mixer 100L) 上-正.逆转/下-正转 高速专用
- ◉ 2022. 参加美国和香港以及中国美博会

Registration & Certification



Venture Business
Certificate
风险企业确认书



Confirmation of Innobiz
(Innovation Business)
技术创新企业确认书



Origin Exporter Certificate
原产地认证出口企业认证书



Autonomous Safety
Confirmation Report Certificate
原产地认证出口企业认证书



ISO9001



Conformity Certificate



Design Registration Certificate
[Homo (Impeller)]
Certificate of design
registration Homo (桨叶)



Design Registration Certificate
[Power Mixer (Impeller)]
Certificate of design
registration 粉末搅拌专用 (桨叶)



Design Registration
Certificate [Ultra (Impeller)]
Certificate of design
registration Ultra (桨叶)



Design Registration Certificate
[Atomizer (Hammer & Liner)]
Certificate of design registration
Atomizer (锤头和顶盘)



Design Registration Certificate
[Atomizer (Screw feeder & Inlet)]
Certificate of design registration
Atomizer (送料螺杆和投料口)



Design Registration
Certificate [ULTRA (Impeller)]
Certificate of design
registration ULTRA (IMPELLER)

Partners

Cosmetics, Semiconductors, and Secondary Batteries

化妆品、半导体以及二次电池



AMORE PACIFIC
COSVISION
CORPORATION

